

The FUSIO Facet Fusion System  
is a product of:

**Frontier Devices**

*a Folsom Metal Products Company*

153 Cahaba Valley Parkway

Pelham, Alabama 35124

Phone: (205) 733-0901

Fax: (205) 733-8445

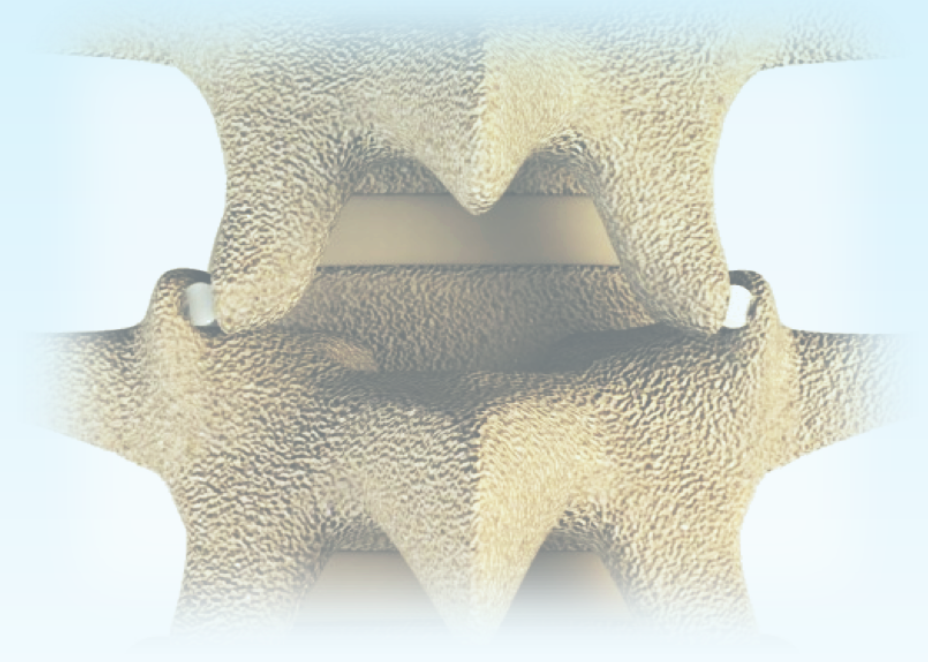
[customercare@frontierdevices.com](mailto:customercare@frontierdevices.com)

[www.frontierdevices.com](http://www.frontierdevices.com)

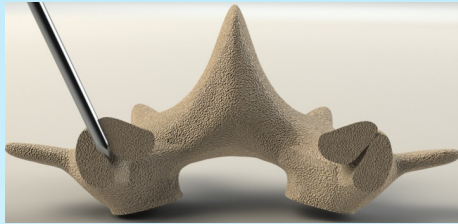


# FUSIO

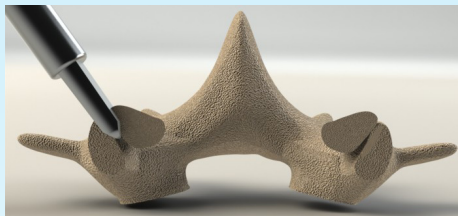
## Facet Fusion System



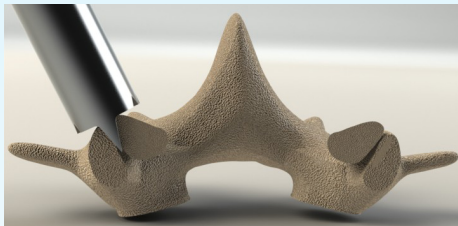
*Surgical Technique*



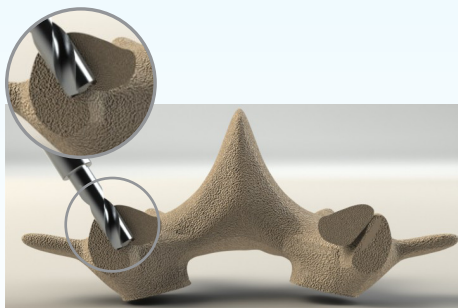
**1. Locate the Facet Joint** — Locate the facet joint and insert guide pin into intraarticular surface using a slight tap with small orthopedic mallet. Repeat on other side.



**2. Insert Facet Finder** — Place the Facet Finder over the pin. Tap with small mallet until teeth have broached facet. Repeat on other side.

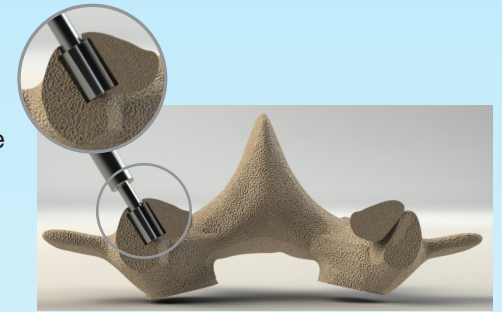


**3. Placement of Drill Guide** — Place the drill guide over the Facet Finder by aligning the distal teeth with the etched line of the Facet Finder. Advance into the facet joint and lightly tap to properly seat the guide.

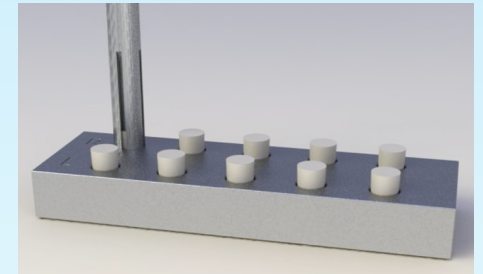


**4. Drill Osteotomy into Facet Joint** — Remove Facet Finder and pin while firmly holding drill guide. Insert drill bit using power driver until drill bit stop comes in contact with the surface of the drill guide. Remove drill bit.

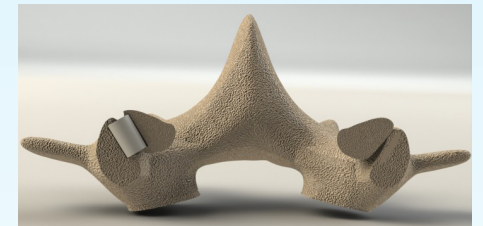
**5. Creating Anti-Migration Rim** — Align t-handle of Anti-Migration Reamer with etching on Drill Guide and insert to full depth stop. Rotate reamer in a clockwise fashion for a minimum of 2 turns. Remove only when t-handle is aligned with etching on drill guide.



**6. Graft Insertion** — Place sterile allograft dowel in the Insertion Block with small end down. Insert dowel into Graft Inserter by placing over the dowel and pressing downward. Place Graft Inserter and dowel into Drill Guide to depth stop. Using Bone Tamp gently tap until fully seated on Graft Inserter.



**7. Dowel Placement and Anti-Migration Rim** — Insertion of the allograft dowel past the cortical rim is now achieved and the desired distraction and stabilization of the facet joint will promote a solid boney fusion.



**8. Contra-Lateral Side** — After removal of all instrumentation, repeat steps 3 - 6 on the opposite side of the vertebrae where the guide pin and Facet Finder were previously placed during steps 1 and 2.

